



**Sara Navrady**  
Associate Architect

**With Mecanoo since** 2015

**Professional qualifications** Delft University of Technology, Master of Science in Architecture (honorable mention); Registered with the Bureau Architectenregister (NL)

Sara graduated from the Delft University of Technology in 2012. Prior to joining Mecanoo in 2015, she worked in multi-disciplinary offices in Calgary, Boston, London, Paris, Brisbane and Basel. Sara has broad international experience working across all scales from urban design to architectural and interior conception, detailing and execution. Sara's focus on overall strategy and communication with a keen attention to detail, brings strength to the design and project process by ensuring a refined and adaptable work flow and integrated collaboration with clients and consultants. Sara has considerable experience with managing international projects and leads Mecanoo teams on projects such as the Lawson Centre for Sustainability and Jacob's Pillow Doris Duke Theatre.

## Selected projects



**Velodrome and Sports Complex,  
Mondorf-les-Bains, Luxembourg**

Size: 24,500 m<sup>2</sup>  
Year: 2018 - 2027



**Lawson Centre for Sustainability,  
Toronto, Canada**

Size: 14,450 m<sup>2</sup>  
Year: 2019 - 2025



**Jacob's Pillow Doris Duke  
Theatre, Becket, US**

Size: 1,800 m<sup>2</sup>  
Year: 2022 - 2025



**European Investment Bank,  
Kirchberg, Luxembourg**

Size: 62,000 m<sup>2</sup>  
Year: 2014 - 2026



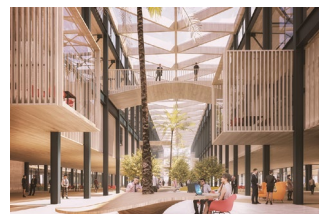
**St. Lawrence Centre for the  
Arts, Toronto, Canada**

Size: 16,750 m<sup>2</sup>  
Year: 2022 - 2023



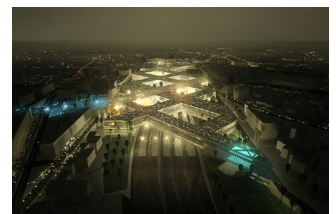
**Nieuw Land National Park, NL**

Size: 29,000 ha  
Year: 2018 - 2019



**Mixed-use office development,  
Boston, US**

Size: 90,000 m<sup>2</sup>  
Year: 2017



**Rabat Agdal Train Station, Rabat,  
Morocco**

Size: 176,600 m<sup>2</sup>  
Year: 2013